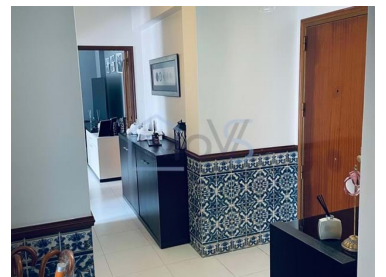
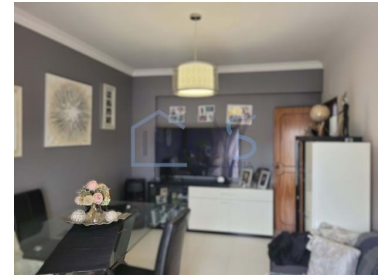




Ferreira do Zêzere - Apartment



1
Bedrooms

1
Bathrooms

55
Area (m²)

N/A
(EUR €)

Renovated 1 bedroom apartment in the center of Ferreira do Zêzere

Discover this excellent 1 bedroom apartment, renovated and in great condition, located in the center of the quiet village of Ferreira do Zêzere. With a private area of 55 m², this is the perfect opportunity for those looking for comfort, practicality and good location.

Property Features:

- Located on the 3rd floor of a building without elevator.
- Spacious living room with fireplace, perfect for creating a cozy atmosphere.
- Fully equipped, practical and functional kitchen.
- 1 comfortable and bright bedroom.
- Modern and functional bathroom with shower.
- Storage room in the attic with about 10 m², ideal for additional storage.

T +351 967582828 ² · T 300 404 457 ¹ · E geral@imovsimobiliaria.com
 Edifício Malhoa Plaza Rua Eduardo Malta N.º. 20 - Escritório 1.1, 1070-073 Lisboa
 AMI 21740

¹ (Call to national fixed network) | ² (Call to national mobile network)



This apartment was renovated in 2014 and remains in excellent condition. Its privileged sun exposure provides plenty of natural light throughout the day, creating a bright and welcoming environment.

Prime Location:

Located in the center of the village of Ferreira do Zêzere, this property offers easy access to all kinds of shops, services, schools, Health Center and public transport (Bus Station). Enjoy the convenience of living in a quiet area, but with everything you need just a few steps away.

Ideal for investment

If you are looking for a ready-to-move-in apartment, with a great location and in excellent condition, this is the right property for you!

Property Features

- Air conditioning
- Equipped kitchen
- Built year: 1991
- Storage / utility room
- Main drainage
- Energetic certification: E
- Balcony
- Fireplace
- Proximity: Mountain, Shopping, Restaurants, Open field, Pharmacy, Public Transport, Schools, Public Swimming Pools, Playground
- Floors: 3
- Views: Village view
- Attic
- Mains water
- Renovation year: 2014

T +351 967582828 ² · T 300 404 457 ¹ · E geral@imovsimobiliaria.com
Edifício Malhoa Plaza Rua Eduardo Malta N.º. 20 - Escritório 1.1, 1070-073 Lisboa
AMI 21740

¹ (Call to national fixed network) | ² (Call to national mobile network)